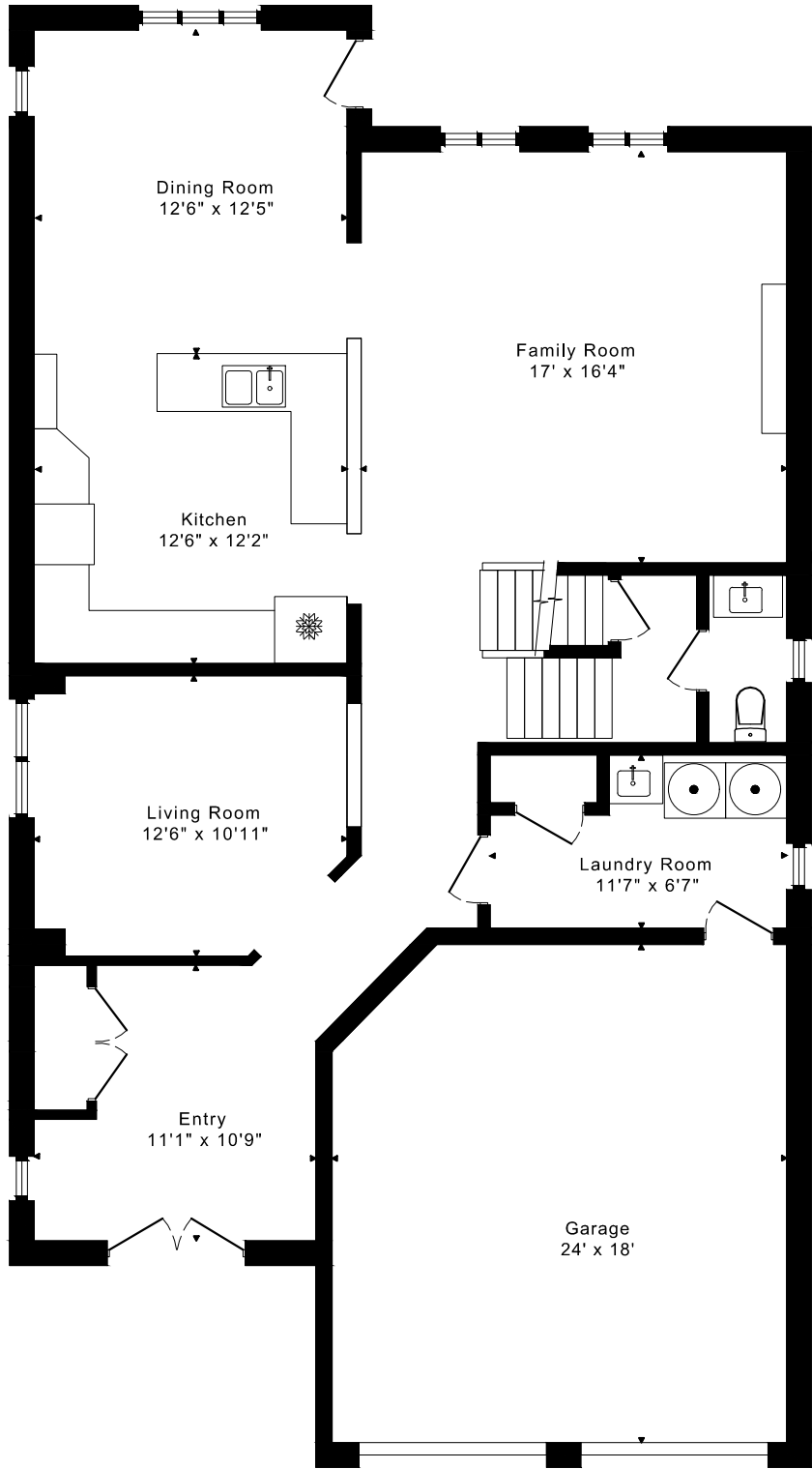
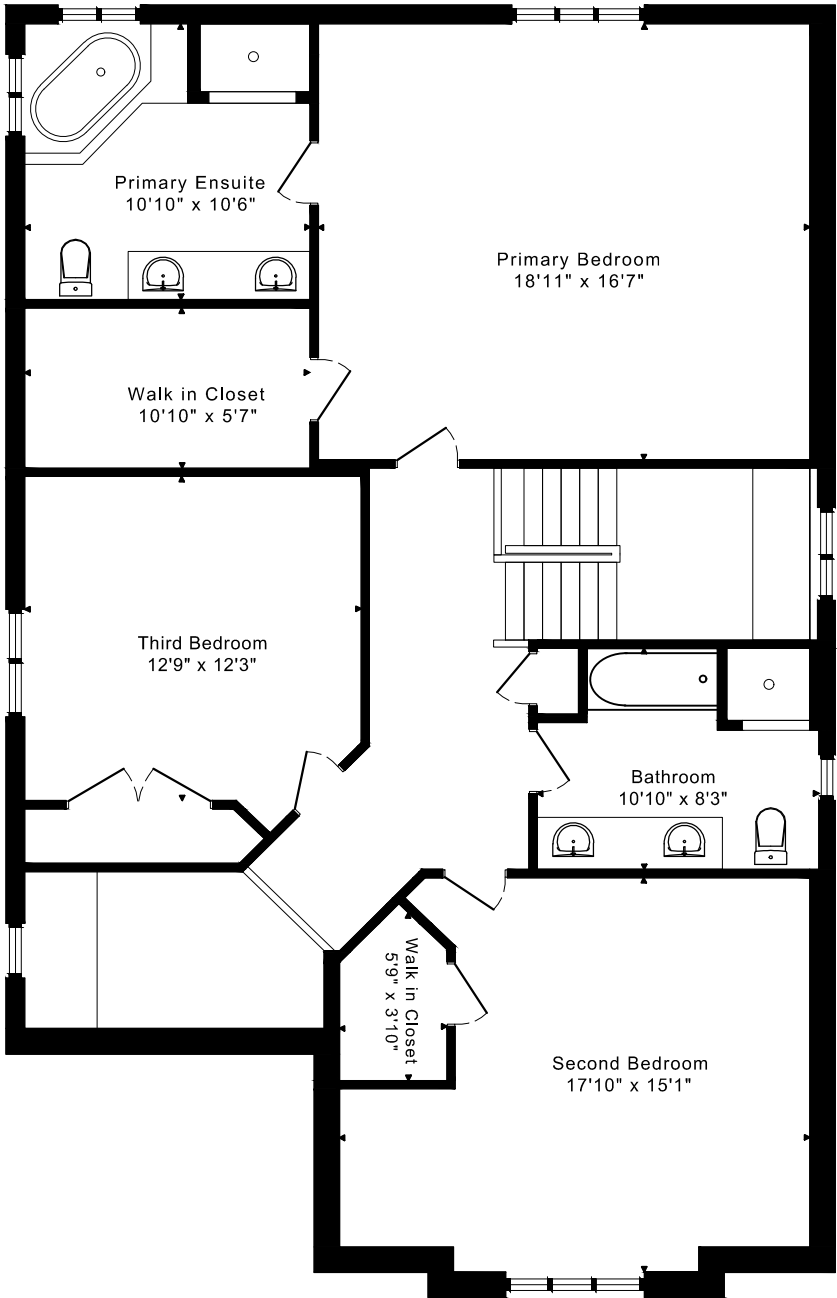


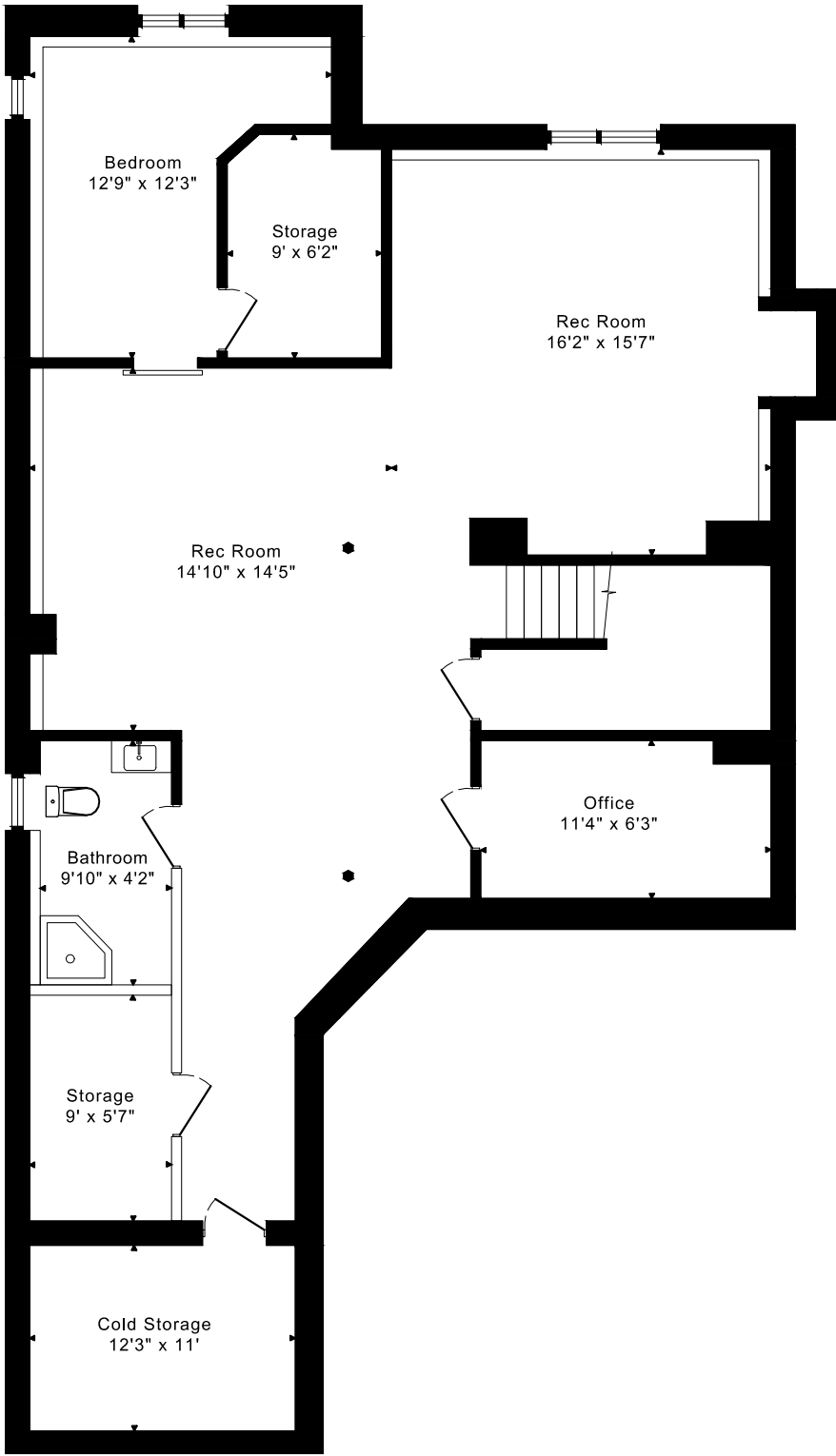
47 PIPER CRESCENT
FLOOR PLANS



MAIN FLOOR
1275 SQUARE FEET



SECOND FLOOR
1375 SQUARE FEET



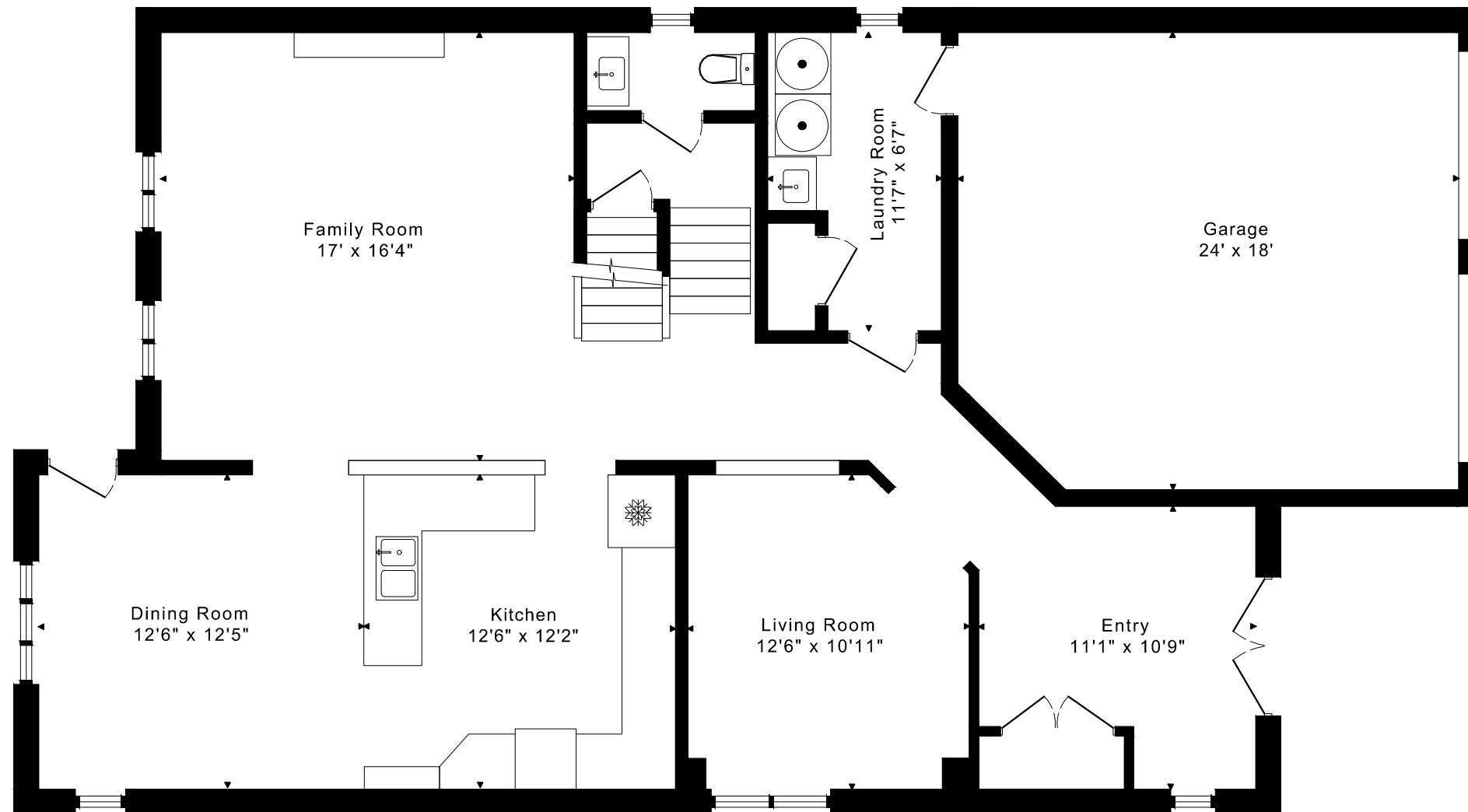
LOWER FLOOR
1380 SQUARE FEET

2650 sq ft + 1380 sq ft
BELOW GRADE

47 PIPER CRESCENT

FLOOR PLANS

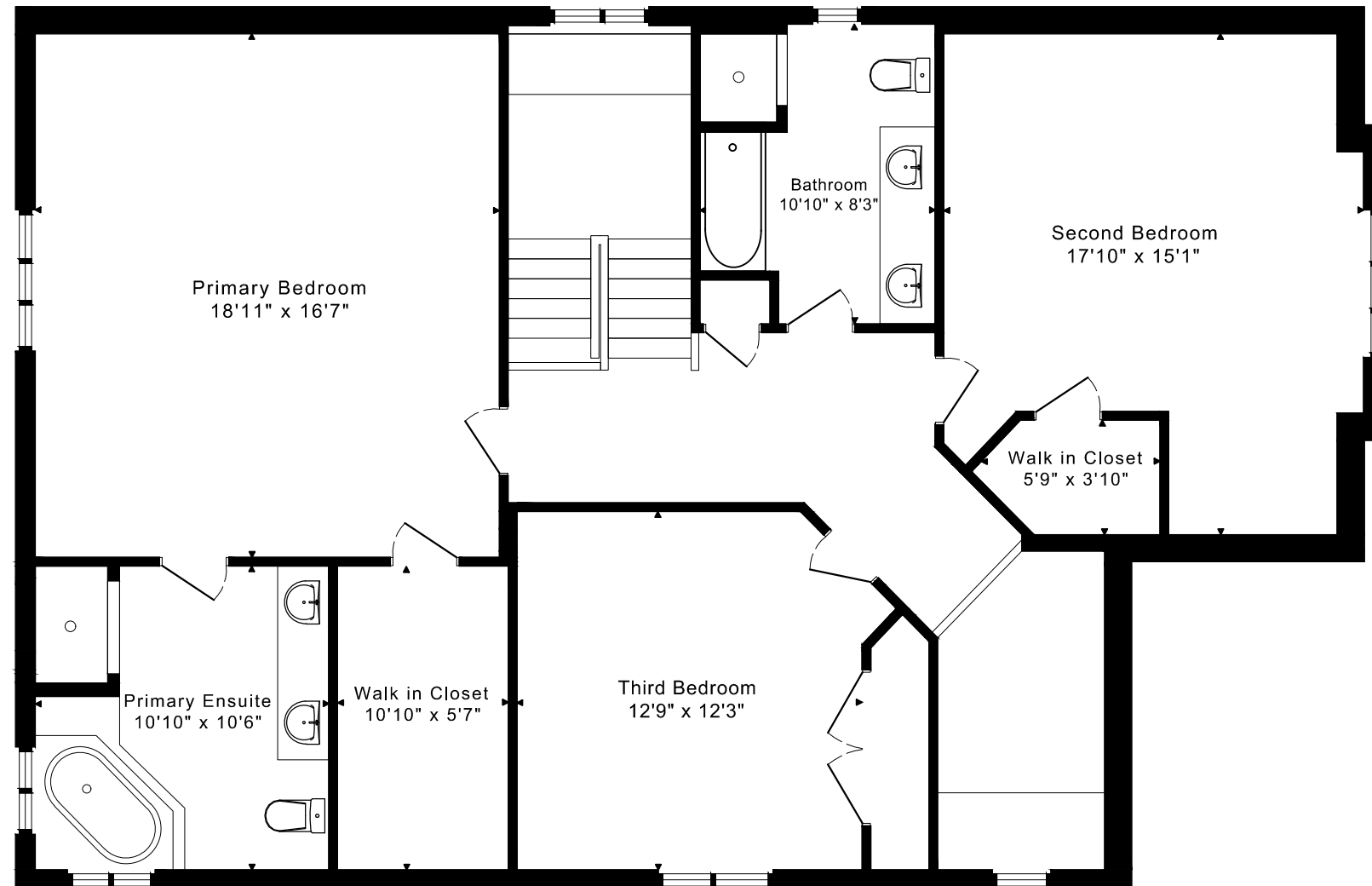
MAIN FLOOR 1275 SQUARE FEET



47 PIPER CRESCENT

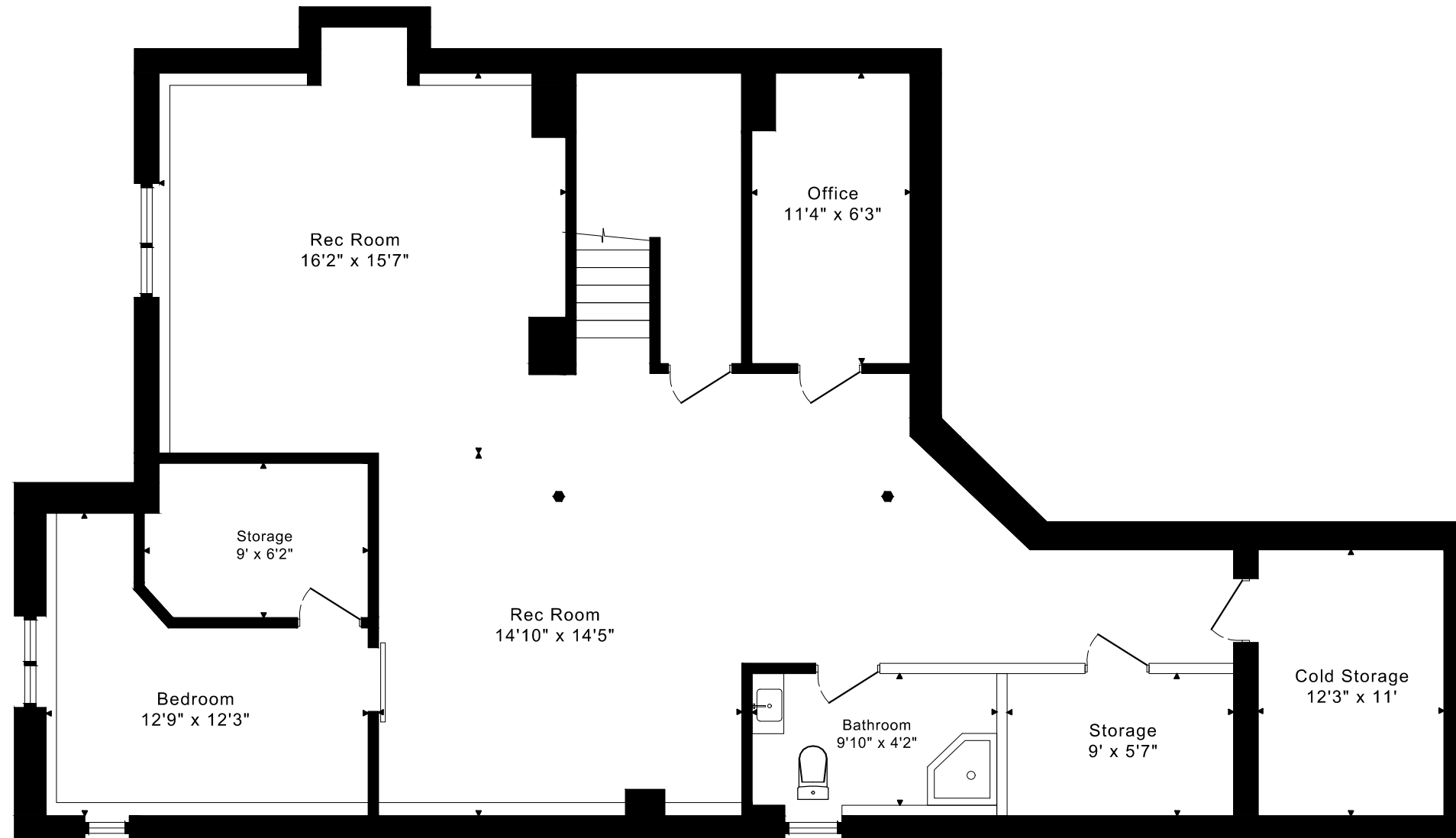
FLOOR PLANS

SECOND FLOOR 1375 SQUARE FEET



47 PIPER CRESCENT FLOOR PLANS

LOWER FLOOR 1380 SQUARE FEET



47 PIPER CRESCENT ROOM MEASUREMENTS

Floor	Room	Imperial				Metric [m]	
		Length		Width		Length	Width
		Feet	Inches	Feet	Inches		
Second	Primary Bedroom	18	11	16	7	5,77	5,05
	Primary Ensuite	10	10	10	6	3,30	3,20
	Walk in Closet	10	10	5	7	3,30	1,70
	Second Bedroom	17	10	15	1	5,44	4,60
	Walk in Closet	5	9	3	10	1,75	1,17
	Third Bedroom	12	9	12	3	3,89	3,73
	Bathroom	10	10	8	3	3,30	2,51
Main	Entry	11	1	10	9	3,38	3,28
	Living Room	12	6	10	11	3,81	3,33
	Dining Room	12	6	12	5	3,81	3,78
	Kitchen	12	6	12	2	3,81	3,71
	Family Room	17	0	16	4	5,18	4,98
	Laundry Room	11	7	6	7	3,53	2,01
	Garage	24	0	18	0	7,32	5,49
Lower	Rec Room	16	2	15	7	4,93	4,75
	Rec Room	14	10	14	5	4,52	4,39
	Bedroom	12	9	12	3	3,89	3,73
	Storage	9	0	6	2	2,74	1,88
	Office	11	4	6	3	3,45	1,91
	Bathroom	9	10	4	2	3,00	1,27
	Cold Storage	12	3	11	0	3,73	3,35
	Storage	9	0	5	7	2,74	1,70

CAPTURED ON: 2 OCT 2024
 DIMENSIONS ARE APPROXIMATE AND SHOULD BE CONSIDERED
 ILLUSTRATIVE ONLY.

2650 sq ft + 1380 sq ft
 BELOW GRADE

The following is a disclaimer regarding the approximate nature of dimensions and floor areas listed in this document:

Disclaimer:

The dimensions and floor areas listed in this document are provided as an estimate only and are intended to be used for illustration purposes only. These measurements are not necessarily meant to be a perfect representation of the actual space.

Notes regarding measurement methods and accuracy:

The utilization of laser measurement technology during the 3D model capturing process at the location provides an accurate representation of floor plans, with a typical margin of error of 3-5%. For the most accurate and official measurement data, it is advised to consult official documents such as MPAC records, builder's pre-construction plans, or data from certified measurement companies.

Exterior wall thickness is included in the calculation of the overall square footage and is considered as a component of the footprint. The wall thickness measurement is obtained onsite whenever possible, or estimated in the event where obtaining onsite measurements is not possible, such as in the case of condominium buildings where wall thickness may vary throughout the building.